



## Contents

|                                 |      |
|---------------------------------|------|
| Meeting Debriefing.....         | 1    |
| Regional Meetings Schedule..... | 1    |
| Con Roundup.....                | 2    |
| Colucci's Tanks.....            | 2    |
| Another Kar by Korn.....        | 3    |
| Closet Modeler.....             | 4    |
| Coca-Cola Cooler.....           | 5    |
| Meeting photos.....             | 9-13 |
| CATCH '22.....                  | 16   |

## Events

*Contact & meeting info on regional model building groups and info on upcoming cons and other events.*

### **New Bern Maritime Modelers Guild.**

Meeting location TBA, 3850 Butler Rd, New Bern, NC the second Saturday of each month at 12:00 noon. For up to date info on their meeting: <https://www.facebook.com/nbmmgnc>

### **Wilmington, NC Plastic Moelers**

Meets at the new Hanover County Public Library, 3802 S. College Rd, 1st Saturday, 2:00 pm Wimington <https://www.facebook.com/groups/117277425006833>

### **Jacksonville NC Plastic Modelers**

meet every third Wednesday at 7:00 pm at The Hobby Chest, 345 Western Blvd, Jacksonville, NC. The Hobby Chest carries a great selec-

*(continued on page 2)*

## Meeting Debriefing

The meeting opened with an excellent turn out. We had 17 attending including several new faces. We welcome Neil and Rodney

Old business was as follows, Treasurer's Report; balance is \$3,773.03, we renewed our membership to IMPS and need to cut a check to Alan for \$100 repayment of the raffle prize.

We decided to hold the January meeting on Jan. 22 and will have food (brought from members). There is a sign up sheet on the website for coordinating what we are bringing in. Please go to:

<https://www.ecpmod.com/chapter-business.html>

and scroll down to find it.

Updates on CATCH '22  
The registration page is live and we have had an increase in visits to our website; we have 2 builders and 3 models already entered for the contest, but expect things to pick up in the new year; many members

*(continued on page 4)*

# Events

(continued from page 1)

tion of hobby kits and supplies and is a grand center for tabletop gaming activities. <https://www.facebook.com/groups/1319666224752922>

**IPMS Eagle Squadron** General meeting on the second Sunday at 1:00 pm - 3:00 pm at the American Legion Post 116 in Fuquay Varina and an Informal Build Night, Hangar 18 Hobbies in Cary the last Wednesday of each month from 6pm-8pm. <https://www.facebook.com/IPM-SEagleSquadron>

**Carolina Maritime Model Society** Next meeting will be 2:00pm, September 25 at the North Carolina Maritime Museum, 315 Front St., Beaufort, NC. This group builds ships and boats and the museum is a great meeting space. <https://www.facebook.com/CMMSNC>

## Model Con Roundup



**January 15, 2022 • SCMA**  
**Hope It Don't Snow & Contest**  
Marriott Hotel Ballroom  
299 North Church St.  
Spartanburg, SC

**Sunday, May 14, 2022**  
**Smoky Mountain Model-Con**  
9245 Fox Lonas Rd. NW,  
Knoxville, Tn  
[WWW.KNOXVILLESCALEMODELERS.COM](http://WWW.KNOXVILLESCALEMODELERS.COM)

## Unique Armor by Colucci

*Two different and unique builds by Charles Colucci*



(above) *The business end of an M50A1 "Ontos", a not overly successful experiment in light armor.*

My first build is the Academy M50A1 Ontos in 1/35 scale. The Ontos was designed in 1952 and produced from 1955 to 1957. It remained in service from 1956 to 1969. There were 297 vehicles produced in total.

The vehicle supported a three man crew and was armed with 6 M60 106mm Recoilless Rifles and 1 30 cal. Browning machine gun. It was designed as a tank destroyer, however during the Vietnam war, most M50,s did not engage enemy armor since the North Vietnamese Army deployed very few tanks. Instead they were used by the U.S. Marines for direct fire support by Infantry in combat.

The weapon was used in an anti tank role during the Dominican Civil War

As far as the kit is concerned, it was by far the most difficult model I've ever built. The main problem was assembly of the main armament. Each of the individual gun tubes consisted of over 20 parts and after they were assembled, they had to be lined up and assembled as the turret. And, of course, they would not line up. The only way to fix it would be to completely break it apart and then try and get it back together. I decided to just live with it since it's not visible to most unless you really look for it.

Other than the problem I had with the guns, the rest of the kit was not too bad. It has pretty good detail and I think the overall results was ok. Not exactly contest worthy but I can live with it.

*(continued on page 6)*



# Tamiya Citroën 11CV



*(above) The grouping so far, the ground crew and pilot awaiting the still to be built aircraft. They still look good even with the fighter off camera.*

The struggle continues, but this time with less hassles and the only real mistakes were not the fault of the kits, but of the builder . . .

I decided it was time for a mojo build, something quick and easy, so you go to Tamiya. Funny that I have never built a Tamiya kit before now, but rest assured I look forward to building more in the future. So, I grabbed a 1/48 scale Citroën Traction 11CV Staff Car for the German Luftwaffe and yes, one of these days I will build a Bf109 aircraft to go along with the Opel Fuel Truck I already finished and now this staff car.

The kit was purchased on eBay and is a first issue from 2005 . . . they have since re-released the kit with more parts in 2007 and another rebox after that. This is not news to any of the modelers in this club, but the Tamiya kit went together amazingly well and the only fit issue was caused by my failure to check the fit and clean out a pin hole enough for a closer fit.

Though for some this would probably be a weekend build, it took a few weeks for me. There was a holiday in there somewhere that slowed prog-

ress down, but I like to leave painted items to cure for a few days before moving on. Had some fun with weathering and I look forward to tying the whole package (fuel truck, staff car and figures) into a nice diorama after I finish a suitable plane.

To go along with the Fuel Truck and the Staff Car I built the figures included in the ICM Bf 109F-2 kit .



*(above) Contents of box, not too intimidating, even after my go-around with Bullett's Mustang in last month's issue.*

. . not sure if this is the plane model I will build . . . since I have a Tamiya kit in the stash and my love affair with Tamiya is just starting.

*(continued on page 15)*



*(above) The crew for my soon-to-be-diorama is reporting for duty. I've assembled them save for the fellow sitting on the wing of the Messerschmitt. His seat will be arriving soon, though.*

# Meeting

(continued from page 1)

brought in models for the raffle and David stated that he has picked out 6 models for the silent auction already.

David and Jeff had a long discussion on the number of kits a vendor should donate for a free vendor table, though a final decision on one or two was not made.

Mark Gray brought in his 1:32 scale Revell Tornado ECR that he built sometime ago. The kit was released in 2014, so it has been sitting on his shelf since. Saturday's meeting was its first unveiling and for that we feel honored.

David Mohr brought in a scratch build figure which we all found very clever. It was a representation of a favorite character (Prince) in a favorite video game he played called Katamari Damacy. Apparently Prince, in the video game, gathers lost objects and puts them into a giant ball that slowly grows. In David's display, he calls the ball of lost objects the Carpet Monster which is made up of scrap pieces from all his other models. Of course, all those other builders shouted out "oh, there is my lost landing gear, oh there's my lost tread, oh, well you get the point.

William Reese, though he did not bring any models, told us he is working on a Japanese Zero which is his favorite Japanese World War II plane.

Richard Adams brought in a large scale PT-17 trainer and a Sopwith Camel both wood and, in the Kaydet's case, paper builds and beautiful to see. His third was a plastic build of Lindberg's Nantucket Lightship which is still underway. (The build, that is, not the lightship)

Robert Brackin brought a beautiful figure diorama of Custer's last stand at Little Bighorn. The model was cast in white metal so he primes it before painting with Vallejo Model Color.

Neil Watts, by the way, is now officially a new member of ECPM. Welcome aboard Neil.

Neil announced that he is newly retired and he's going to start working on a F-86 that has already been built. What he is working on is, actually, the weathering of said plane. I know I've been in that

spot where you've worked so hard on a model that weathering becomes anxiety building as you don't want to ruin all the hard work you already put into the build. Good idea Neil and good luck.

Steve Kasza brought in quite a collection of five of his latest builds. MPM 1/72 XP-55A, Eduard 1/72 Fokker Dr.I, Matchbox 1/72 HS 125, Hobby Boss 1/35 PTL-02, DML 1/35 T-34/85 As usual, Steve impressed us not only with his great quality builds but what was more impressive was he did all models within 10 days.

Chuck Colucci brought in two beautiful tanks that you can read about in this very newsletter. Just briefly his builds were the German UBERPANZER Maus and a T-34/76. Read more about them in the article on page 2.

Jeff Maples, brought in a Spitfire Mk IXe that represents the Spitfires that smuggled in from Czechoslovakia in 1948 to the newly forming State of Israel which (at that time) did not have their own Air Force.

In short, the Eduard Velvetta kit was started but never finished by two other modelers. Jeff was the last builder to get it and finally finished it. You'll be able to read more about it in Jeff's upcoming article in the January newsletter.

Dennis Korn brought in his 1/48 Citroen 11CV in Luftwaffe service. That article starts on page 3.

Alan Welch displayed 2 WW-11 vintage USN aircraft in 1/72. The Vought Kingfisher was from the group last assigned to the battleship Arizona, Dec.7, 1941. The F4F-3 Wildcat is from an indeterminate group operating from Henderson field and showing a good bit of war weariness.

And finally, Robert Brackin held the winning ticket in the raffle drawing for the \$100.00 gift certificate to Hobby Chest in Jacksonville.

Congratulations Robert. ■

-Editor

*"We don't stop playing because we grow old; we grow old because we stop playing."*

- George Bernard Shaw

# Closet Modeler

Ah... 'Tis the season! From November to January, Thanksgiving to New Years, is for me as a modeler, or anyone with hobbies a difficult time to enjoy those hobbies. Time's filled with family showing up for Thanksgiving from all parts of the country and precludes finding a quiet moment to glue a couple of plastic bits together or putting on paint. It's called being anti-social to family that don't share the same interests.

November is the month of Thanksgiving, to be thankful – for having a job. A job that allows me to work in a 4-man shop, that's down to 2 men, and one of them is forced to take time off because he has too much comp-time! So, I'm doing the work of two, and when I get home and try to sit down with a very lonely B-17, I'm either not done with stuff to do, or too tired to take time out for myself.

OK, so how about taking just a few minutes to write something to contribute to the newsletter? Great idea until my trusted computer decided to take an extended vacation to the nether land! Just great! Until this little dilemma is resolved I don't have an outlet other than the other outlet I have that no-one will allow me time to enjoy. Get through Thanksgiving, extended family goes away and hopefully while the computer doctors try to revive the beast, I can get some glue and paint time in, provided I have the energy after work each day to do that. And then...

I'm beginning to believe that if I didn't have bad luck, I wouldn't have any luck at all. Then one day I found I was alone. No-one to bug me, ask for something to be fixed or taken care  
(continued on page 14)



# 1932 Coca-Cola Cooler



*The back end of the "Cooler" shows off how the Tamiya paint over chrome bezels looks. The kit supplied decals are dreams to apply and this shot shows the metal flake red to advantage I'm pretty happy with the results and really enjoyed the build. Now on to the next delivery vehicle.*

Like my friend Dennis Korn recently did I decided that, after a particularly trying build, I needed something easy and fun to assemble. Something to get back to the "relaxing" part of model building. I had already finished a 1925 Ford Coca-Cola delivery van so I thought I would do a newer version, the 1932 sedan Coke deliverer since I already had the kit in house.

Unlike the earlier version which was stock, I thought it would be fun to do a newer version of the Coke Classic, sort of my version of a cooler custom delivery crate.

I started with a basic OOB build simply using the parts that came in the box. The build was straight forward and mostly easy. I decided that since this was a relaxation build I would not put a lot of detail into it, in fact

there was only one addition I added to the kit but more on that later.

I used the kit engine which was not the original stock four banger nor the flat head V-8 that was introduced that year. There was no option in the kit to build it as a stock 1932 sedan so I happily shoved the alternate small block V-8 under the hood . . . supercharged, of course and went ahead with the custom interior and modern wheels and tires. (The kit also came with alternate wire wheels, but . . .

I had finished the earlier van in all Coca-Cola red so my first thought was to do an all white counterpart. But, geez, it was going to look so plain Jane I was just not happy even with the Coke company livery on it. Then, while visiting my local brick and mortar hobby shop, (Hobby Chest here in Jacksonville), WOW!

INSPIRATION struck!! I found a rattle can of metal flake RED! What could be better?

And doing a two-tone scheme could really not be easier since the body and fenders are separate pieces! The metal flake came out just fine and really livened up the build. The instructions said to glue the rear side windows in place then paint along with the rest of the body to convert it to the panel truck, but I already had one panel truck and, besides, I had an addition to make.

I had found a seller on ebay who had 1/25 scale cases of Cokes and was asking a dollar apiece so I bought 25. (I am, after all, doing a series.) Then I cut a piece of styrofoam to size, (hey, waste not want not, why use the after market cases where they would not be seen?), painted it black and surrounded it with the cases of colas in the back area behind the front seats.

The build was easy-peasy, all parts went together nicely and the only fiddly bit was getting the radiator and hood to match up. I used Tamiya

*(continued on page 7)*



## Colucci's Armor

*(continued from page 2)*

Next up is my Dragon Pz.Kpfw.VIII (Panzer VIII). It holds the record for heaviest fully enclosed tank built, though not the largest. The French Char 2c holds the privilege. It was designed in 1941 and produced in 1944. Only 2 hulls and 1 turret were completed.

It had a 6 man crew and as far as armament, It had a 128 mm (5 inch) Kwk 44/L55 gun which carried 68 rounds; A coaxial 75mm Kwk 44/36.5 gun w/100 rounds and a 7.92mm machine gun w/1000 rounds.

When completed the vehicle was 33 ft long, 12.5 ft wide, 11.9 ft high and weighed 188 metric tons. Both vehicles were captured when the soviets overcame Kummersdorf proving grounds during testing. They never saw any action.

As far as the kit goes, most of the kit consisted of the wheels and suspension. This is where I spent most of my time cleaning the parts, which mostly is not visible on the completed kit. I had a lot of trouble lining things up after assembly and had to get some help with that. Otherwise the rest of the kit was pretty simple since there was not much to it after the wheels and suspension.

The kit also had individual track links, some of which were not used since they weren't visible. The only thing I added were the fuel hose and the light cables and antenna mounts that were not provided with the kit but I deemed necessary. The kit was painted with Tamiya paint and Oils and lightly weathered in the usual fashion.

*(continued on page 8)*



*(above) The massive "Maus", (an experiment not only in super-heavy AFV design but also German naming irony), shows the incredible thickness of her armor. Found to be virtually useless due to her weight and lack of an adequate engine/drive train or enough bridges strong enough to support her.*



*(above) The vehicle used an gasoline engine to power an electric drive which could only move the panzer at a top speed of between 13 and 14 miles per hour, and this on improved roads. One wonders about the insanity of devoting this much time and resources to the development of a "Breakthrough Tank" at a time when the country was desperately trying to stop the allied invasion of the Fatherland.*

But what I really want to know is who IS in the kitchen with Dinah and why is he playing that stupid old banjo?



# Coca-Cola Cooler

*(continued from page 5)*

translucent red for the tail lights and when that is painted over the chrome tail light bezels they look just fine.

All this happens after a coat or two of gloss clear coat, then final bits and pieces attached and a bit of touch up and Bob's your uncle.

The decals were beautiful and since this is a flight of fancy you can decorate it as you will. I had a lot of fun with this and recommend the build.

Now to enjoy a tall cool one . . . diet of course. Cheers. ■

**-Alan Welch**

**editor's note:**

**For a photo of the finished build see page 12**



*(above) Here is the load of drinks to be delivered. I used a chrome pen to highlight what I felt competent to pick out, the rest was left painted.*



*(above) Almost finished with just the engine compartment and chrome trim yet to fiddle with. I DO wish the tires were a bit softer to get the flattening effect, but that is really nitpicking.*



*(above) Getting closer, still have to mount the headlights and bumper but the build is shaping up nicely. There are several variations of hood treatment available. Again, the cargo is visible through the rear windows. Instead of painting over those rear side windows I decided to leave them clear for better visibility while driving. Safety first!*

## Colucci's Armor

*(continued from page 6)*

My third build this month is a Tamiya Soviet T-34/76. I will not get too much into the history because it is so vast but briefly, the T-34 was the mainstay of the Soviet Union throughout WW-II. It remained relatively unchanged until early in 1944 when it received a major upgrade from its 76.2 mm gun to the more powerful 85 mm gun.

The tank was designed from 1937-1940 and produced 1940-1945 by the Soviet Union, 1951-1955 by Poland, and 1951-1958 by Czechoslovakia. It remained in service from 1940-1960 by USSR and 1950-present by 39 other states. There were a total of 84,070 built in many variants; T-34/76 (35,120 built) and T-34/85 (48,950 manufactured).

The T-34/76 supported a 4 man crew while the T-34/85 supported 5. The tank also carried (2) 7.62 mm machine guns. My build represents a vehicle that saw service in the Battle of Kursk ( July 5- Aug.24, 1943).

As far as the kit is concerned, it is by Tamiya and I found it a relatively fun build with no major problems to report. The kit was pretty basic and required a little bit of research to determine which variants to build. It came with two types of wheels and two types of gas tanks so from the photos I can find, I decided to use the square tanks in order to use the mixed tires ( both rubber and steel).I wasn't sure about the handrails and



*(above) The T-34/76 was a very unpleasant surprise for the German army when they entered Russian territory. This, and the KV-1, stood out while the rest of Russian armor proved easy pickings for German panzers.*

the instructions don't really explain them I surmised that it depended on the manufacturer and the variants. So honestly I made up my own and basically just guessed based on what photos I could find. Other than that, the kit is built out of the box and painted in my usual fashion with Tamiya acrylics and Oils. It might not be 100% correct, but I thought it came out reasonably well. ■

*-Charles Colucci*

# JOIN IPMS



**When in Jacksonville  
experience a REAL  
hobby shop again.  
VISIT:**

**HOBBY CHEST**

Your place for:  
Models, Radio Control, Airsoft,  
Board Games, Trading Cards,  
Collectibles, Warhammer!

Wed. - Sat. 11am - 9pm  
Sunday: 12:00 - 6:00pm  
345-A Western Blvd.  
Jacksonville, NC 28546  
910-353-4473  
info@hobbychest.com  
since 1992





*(above) We raffled off a \$100 gift certificate to The Hobby Chest in Jacksonville, (our favorite hobby shop), and Robert Brackin had the winning ticket.*



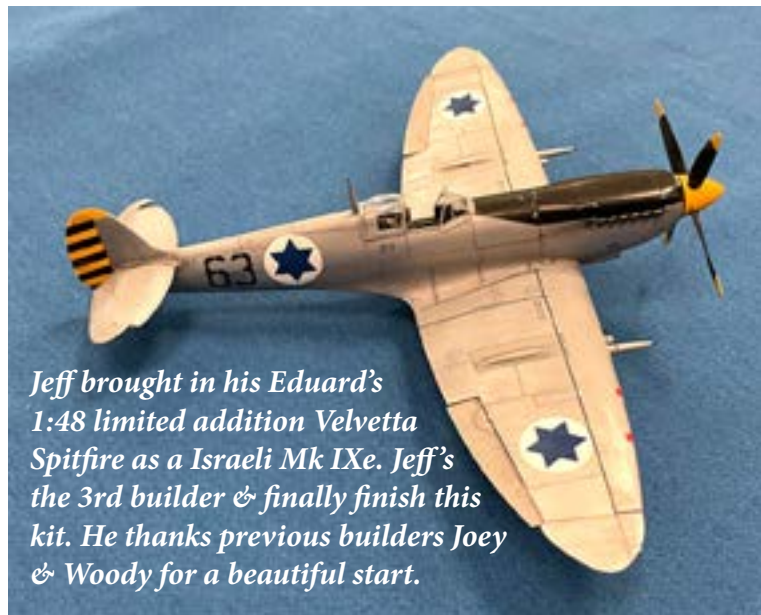
*(left, top) David Mohr brought in his scratch built model of the bane of every model builder's existence, "The Carpet Monster in 1:1 scale. This got a laugh from everyone in attendance.*

*(left) Another view of the Pz.Kpfw. VIII Maus, by Chuck Colucci. This was the heaviest AFV built, but not the overall largest.*



*(Left, bottom) This PT-17 was one of Richard Adams' three builds he showed this month. Although not a plastic model but a balsa and paper construction, it is still a beautiful model and very impressive.*





*Jeff brought in his Eduard's 1:48 limited addition Velveta Spitfire as a Israeli Mk IXe. Jeff's the 3rd builder & finally finish this kit. He thanks previous builders Joey & Woody for a beautiful start.*



*Matchbox 1/72 Hawker Siddeley HS-125, Transport showing the paint scheme when used for flying Royalty, by Steve Kasza.*



*Battle of Little Bighorn River Montana June 25 1876*



*(above) Robert Brackins' 54 mm white metal diorama of Custer's Last Stand*

*(above left) Eduard's Fokker DR-1 uncovered by Steve Kasza in 1/72 and mostly photo etch! This was an absolute feast for the eyes.*

*(left) Mark Gray's model is of a 1/32 Luftwaffe ECR (Electronic Combat Reconnaissance) Panavia Tornado in the markings of a Tiger Meet 2005. It is a Revell kit and the decals were exceptionally good.*



*(right) Steve Kasza's T-34/85, a DML kit in 1/35, the stronger version of Germany's nightmare. We were lucky to have two versions of this AFW to compare, (Chuck brought in a T-34/76). Steve's build has the later tubular external tanks rather than the square ones Chuck used.*



*(right, center) Steve Kasza also brought his Chinese PTL-02, a Hobby Boss kit in 1/35, in hand done digital camo. That whole scheme is done with tape and paint, no mask, no decal, just skill and patience.*



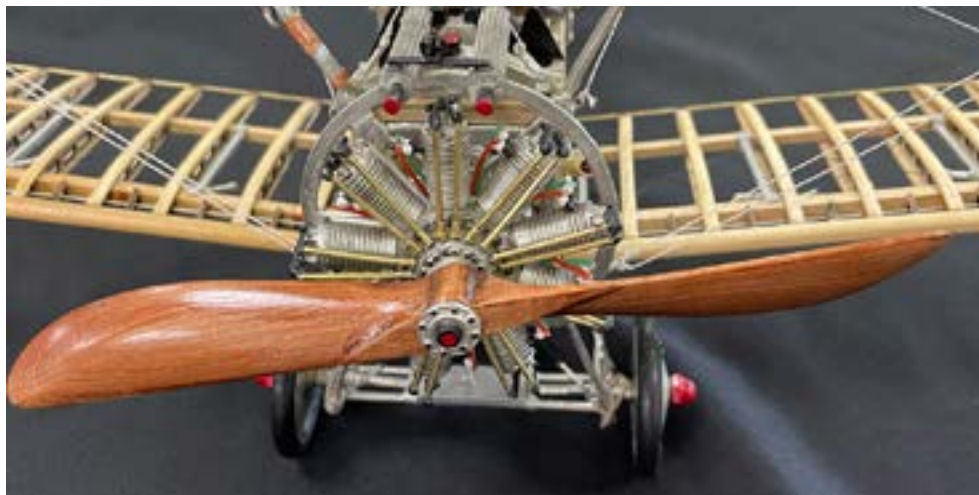
*(right, bottom) An old Lindberg kit of the "Nantucket Lightship" in 1/95 scale. This is an interesting vessel but the kit is giving Richard some issues. It would be nice to see a new tooled version in a standard ship scale, does anyone know of a release? We all look forward to Richard's progress on this project.*







*(above) One of the stranger designs to come out of WW-II was the Curtiss-Wright XP-55 Acsender. This 1/72 kit is by MPM and built by Steve Kasza*



*(left, above) Steve Kasza's 1/72 Fokker C-X, (brand unrecorded) in Republican Spanish Civil War livery.*

*(left) Richard Adams brought in three excellent examples of his model building. Here is a close up of the rotary engine in his outstanding Sopwith Camel in 1/8 scale*



*(left, below) Another view of the meticulous detail which Richard puts into his work. Here is the rigging detail, ribbing, machine guns and home sculpted pilot he crafted himself.*

Breaking News:  
**Scale modeler finds proof  
that Earth is not round!**





*(right and below) Neil Watts brought in a F-86F-30 Sabre, number 604 named Bevkeneve by its pilot Capt. J.F. Nortje who was based at Osan airbase, Korea. He was part of the South African contingent in the Korean War.*



*(above) Dennis Korn's Citroën, featured in an article on page 3. The build is in 1/48 scale which makes it a very small display. But for all that it's a fine build and should look great next to the Bf-109 he plans to build.*



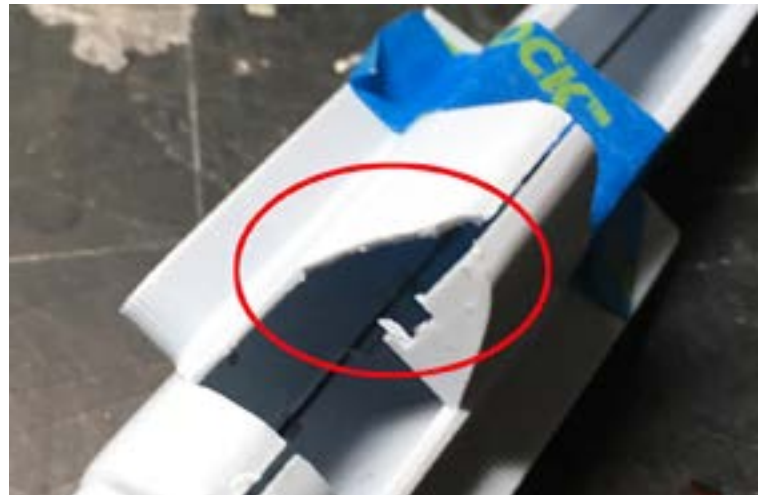
*The Sabre's squadron, known as the "Flying Cheetahs," (patch at right) My model is a 1/72 scale prebuilt and painted by Easy Model distributed by Model Rectifier Corporation (MRC). The kit is fitted with long-range tanks. I was so overjoyed at finding the rare kit online that I did not realize that it was prebuilt, so I intend to make a diorama and age the kit according to photographs of the time.*



*(left) Alan's F4F-3 Wildcat which he believes to be a Hasagawa kit, but it's been so long. Build includes an Aeris cockpit tub, brass tubing machine gun blast tubes, a custom cast internal bulkhead and more and will be the subject of an upcoming article here.*

*(left, lower) An Airfix Kingfisher in 1/72 also by Alan. This kit was bought off ebay and, like many others sold there, was less than perfect. The fuselage was broken at the cockpit, (see below) and had to be rebuilt.*

*(below) the aircraft arrived in this condition . . . slightly disappointing but entirely fixable. (Yes, just another one of those "opportunities" again)*



## Closet Modeler

*(continued from page 4)*

of, or go shopping for any reason. My lonely B-17 was calling to me! This was going to be bliss, right up to the moment the air compressor my air-brush was hooked up to blew apart! I guess I neglected that 30-year-old compressor way too long, and in protest it rebelled by blowing apart.

And my B-17 frowned.

Now we're into December, creeping towards Christmas. And in December comes my daughter's birthday, her graduation from ECU and practices for the Christmas cantata which I run sound and video. My boss is still burning comp-time, and I'm still stressed - a lot!

Oh yeah, the B-17 is still lonely.

Hey, I can at least go to the club meeting and get some face time with like-minded individuals. Wrong! My daughter's birthday and her graduation are back-to-back, and the morning of the meeting, as I'm getting a couple old models together, my lovely wife informs me of a change in plans...that got changed to meeting day as I'm getting ready to leave. When were the plans changed? Oh, that was done on Wednesday, her birth date when she wasn't available to celebrate. How come I wasn't informed? Everyone forgot to pass on the word to me. Outstanding.

So, there I am, sitting at my worktable with my lonely B-17 thinking that this was a WHOLE lot easier

when I was single. Oops...did I just say that out loud? The crossed arms, raised eyebrow and tapping toe suggests that I did. Good grief! A New Years resolution is to keep my inside voice inside my head! Also, no matter what - make time to enjoy modeling. Especially finish this B-17! It's been way to long buddy! And if I'm somehow on Santa's nice list, I just might get a new compressor and a new laptop so the one I have can be removed from life support.

So, on behalf of all stressed out modelers at this time of year, I wish you all a very Merry Christmas, and a safe, fun-filled, enjoyable but responsible Happy New Year! And may all your New Year's resolutions be fulfilled. See you all in 2022! ■

*-David Stitler*

# MODEL AIRPLANE BUILDERS



What my friends think I do



What my mom thinks I do



What my wife thinks I do



What my co-workers think I do



What I think I do



What I actually do



# Citroën

(continued from page 3)

The figures were fun to put together and paint . . . and I'm pretty sure I used every brand of paint I have on shelf to get all the details painted (which I missed plenty). Someone, probably our club Master Builder Steve, will have to teach me how to paint a face in 1/48 scale. But if you stand back a bit, they look just fine.

Progress continues on the Revell USS Lionfish submarine, someday to become the USS Sea Tiger and I have opened the box on my next project project, the AMT Penske PC-6 Indy Car, that should keep me busy whenever I get tired of drilling out holes in the submarine. ■

-Dennis Korn



(above) The finished 1932 Ford Coca-Cola "Cooler". Certainly the most enjoyable build of the last several years. In the Coke series I have yet to build a '55 Chevy pick-up, a '41 Plymouth coupe, (I think AMT is pushing it with this one), a VW Beetle, & a secret project I'm not telling anyone about yet.

## IPMS/USA MEMBERSHIP FORM

IPMS No.: \_\_\_\_\_ Name: \_\_\_\_\_

Address: \_\_\_\_\_ If Renewing \_\_\_\_\_ First \_\_\_\_\_ Middle \_\_\_\_\_ Last \_\_\_\_\_

City: \_\_\_\_\_ State: \_\_\_\_\_ Zip: \_\_\_\_\_

Phone: \_\_\_\_\_ E-mail: \_\_\_\_\_

Signature (required by P.O.) \_\_\_\_\_

Type of Membership ☐ Adult, 1 Year: \$30 ☐ Adult, 2 Years: \$58 ☐ Adult, 3 Years: \$86

☐ Junior (Under 18 Years) \$17 ☐ Family, 1 Year: \$35 (Adult + \$5, One Set Journals) How Many Cards? \_\_\_\_\_

☐ Canada & Mexico: \$35 ☐ Other / Foreign: \$38 (Surface) Checks must be drawn on a US bank or international money order

Payment Method: ☐ Check ☐ Money Order

Chapter Affiliation, (if any): \_\_\_\_\_

If Recommended by an IPMS Member, Please List His / Her Name and Member Number:

Name: \_\_\_\_\_ IPMS No.: \_\_\_\_\_

# IPMS/USA

Join or Renew Online at: [www.ipmsusa.org](http://www.ipmsusa.org)

PO Box 1411

Riverview, FL 33568-1411

# DownEastCon2022



We are proud to announce that our model registration and entry page is live on our website. It can be found at:

**[www.ecpmod.com/contest-entry.html](http://www.ecpmod.com/contest-entry.html)**

We have worked very hard to streamline the process and hopefully ensure that everyone who wishes can register and pay online and printout the forms they need at home and fill them out at their own pace, calmly and without the pressure and anxiety of trying to fight through the crowds and confusio at the event entry.

We narrowed it down to four (4) steps and set up cross checks on our end to make sure everything goes

smoothly and rationally.

We feel we have assembled an excellent team to handle this so we look forward to staging and producing a first rate con for everyone's fun and enjoyment.

I personally, and the ECPM chapter, urge builders who are interested in attending to register online using our site and the PayPal link which is safe, smooth and elegant to use, then come and enjoy our con with as little stress and inconvenience as possible.

It will be a great July!

The Havelock Tourist and Event Center is a great place for this event with great air conditioning, fine amenities, and many eateries and restaurants in close proximity with at least one within walking distance.

Our plan is to continue to post new updates and information regularly on our website:

**<https://www.ecpmod.com/downeastcon-2022.html>**

So visit the site often and we'll be happy to answer any questions you may have and help you stay tuned

Cheers. ■

*-Editor*

## *Editor's Note:*

*2021 was a dynamic year. The chapter lost a valued member, lives changed for several, new members joined, and some old friends returned. All in all, I am counting this as a positive year despite the losses and the continuing Covid issue.*

*So, to all my fellow chapter members, thanks for a great year. We've had some terrific builds, enjoyable meetings, and lot's of info has been shared. (Don't forget the January meeting date shift)*

*This past year, I have watched enthusiasm grow amongst our ECPM Chapter members not only with increased numbers at each monthly meeting but, also, with increased participation at Show & Tell. I know that will continue through 2022. ■*

*-Editor*



**Don't forget, next month's meeting will be Saturday, January 22, 2022, 12:00 noon till 2:00 at the Fairfield Harbor Fire Department, 585 Broad. Creek Rd. Please bring your new builds, any work-in-progress projects and food.**

**Isn't it time you joined IPMS? [http://www.ipmsusa3.org/uploads/ipms\\_application\\_form\\_2019.pdf](http://www.ipmsusa3.org/uploads/ipms_application_form_2019.pdf)**